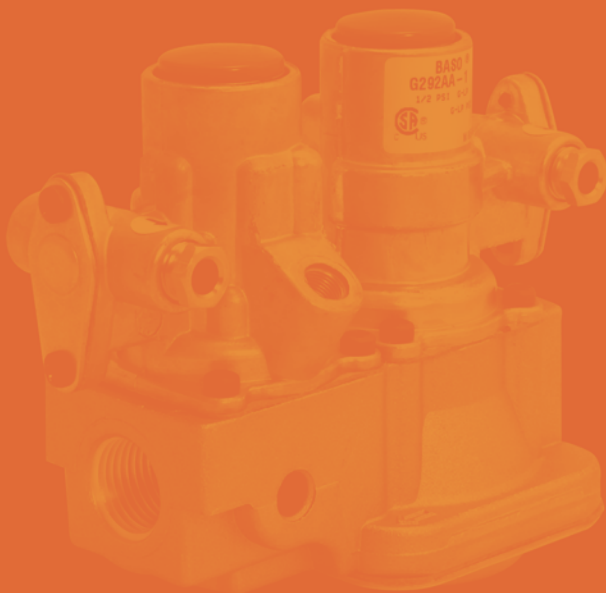


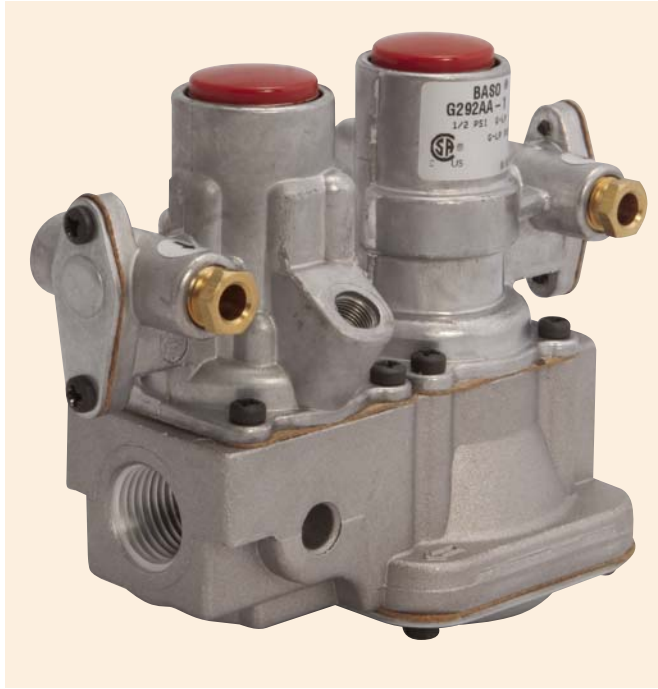
# Thermocouple-Operated Combination Gas Valves





BASO Gas Products LLC

## G292 Series BASO® Dual Pilot Gas Valve



### Description

The G292 Series is a dual pilot gas valve intended for use with a dual burner system that requires a continuously burning standing pilot at two burners. Typical applications include commercial cooking equipment and similar applications. The G292 valve can be used with natural gas and LP gas, at pressures up to 0.5 psi.

### Specifications

- Maximum inlet pressure is 0.5 psi
- Natural Gas Capacity Btu/hr at 1 in. pressure drop is 240,000
- Permissible ambient (surface) temperature is -30 to 175°F (-34 to 80°C)

### Agency Listing

- CSA (AGA/CGA) Certificate Number 229521-1656050

### To Order

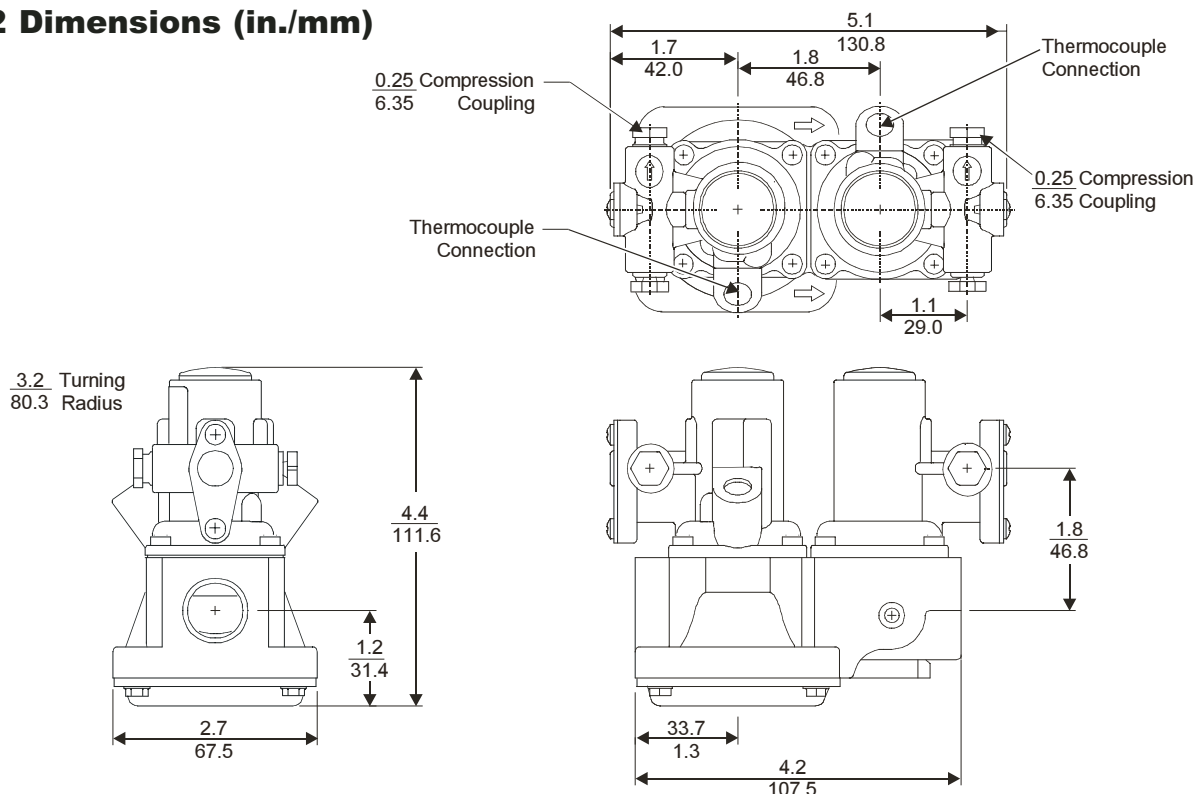
To order genuine BASO products, call 1-877-227-6427 (1-877-BASOGAS). Specify the code number from the following selection chart.

Other models may be made available depending upon customer requirements. Contact BASO Gas Products for availability of products not shown.

### Selection Chart

Code Number	Inlet and Outlet	Pilot Tap (in.)
G292AA-1	1/2 in. X 1/2 in. NPT	1/4 cc

### G292 Dimensions (in./mm)





BASO Gas Products LLC

## G92 Series BASOTROL® Automatic Combination Gas Valve



### Description

The G92 Series gas valve combines the automatic pilot valve and automatic gas valve functions in one valve. Typical applications include commercial dryers, heaters, agricultural equipment, and similar applications. The G92 valve can be used with natural gas or LP gas, at pressures up to 0.5 psi. The G92 is available with various voltages and cover options. The optional rotor "B" valve allows for pilot flame adjustment.

### Specifications

- Maximum inlet pressure is 0.5 psi
- Natural Gas Capacity Btu/hr at 1 in. pressure drop. is 240,000
- Permissible ambient (surface) temperature is -40 to 175°F (-40 to 79°C) models without rotor valve 32 to 175°F (0 to 79°C) models with rotor valve

### Agency Listing

- CSA (AGA/CGA) Certificate Number 229521-1656050 (excludes G92CSA-5)
- UL Recognized File Number MH2926

### Electrical Connections

- #18 AWG stranded wire or 1/4 in. male quick-connect terminals

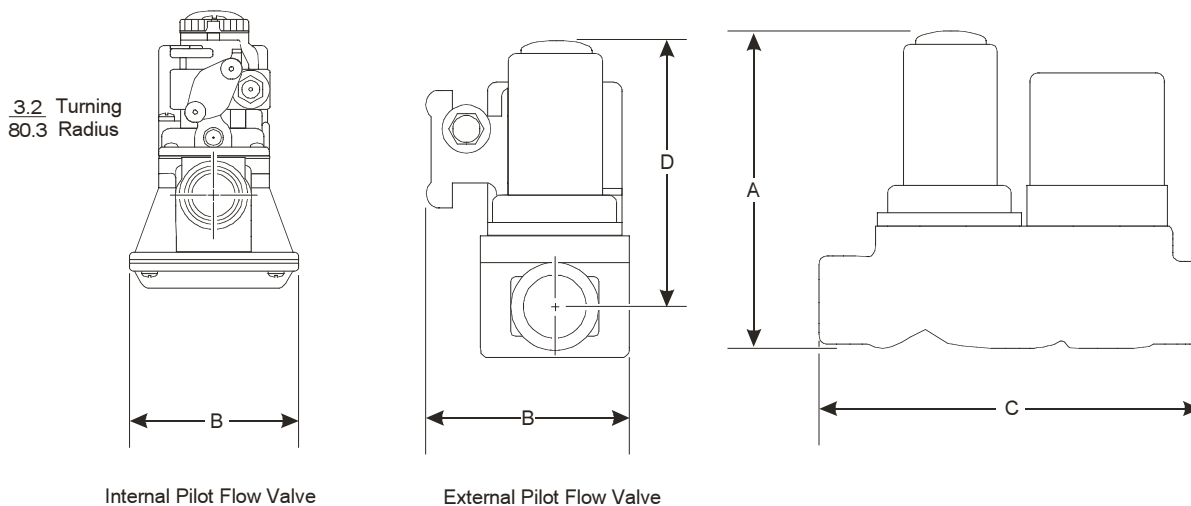
### To Order

To order genuine BASO products, call 1-877-227-6427 (1-877-BASOGAS). Specify the code number from the following selection chart.

Other models may be made available depending upon customer requirements. Contact BASO Gas Products for availability of products not shown.

### Selection Chart

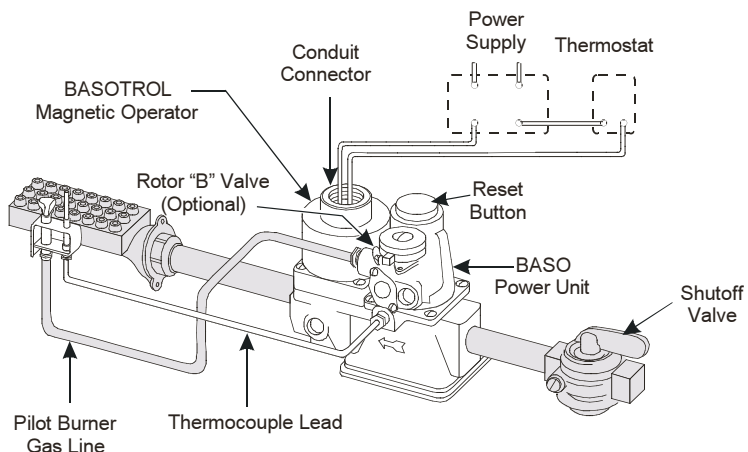
Code Number	Inlet and Outlet Female NPT	VAC (60 Hz)	Pilot Tap (in.)	Pressure Tap (in.)	Pilot Gas Flow/Rotor "B" Valve	Electrical Connection
G92CAA-19	1/2 in. x 1/2 in.	120	1/4 cc left	1/8-27 NPT left and right	Internal/No	18 in. leads
G92CAB-14		120	1/4 cc left	1/8-27 NPT left and right	Internal/Yes	30 in. leads
G92CAC-5		120	1/8-27 NPT and 1/4 cc left	None	External/No	30 in. leads
G92CAC-7		120	(2) 1/4 cc left	None	External/No	30 in. leads
G92CBA-9		240	1/4 cc left	1/8-27 NPT bottom	Internal/No	1/4 in. male spade
G92CBA-10		240	1/4 cc left	1/8-27 NPT left and right	Internal/No	30 in. leads
G92CGB-1		25	1/4 cc right	None	Internal/Yes	1/4 in. male spade
G92CGB-11		25	1/4 cc left	1/8-27 NPT left and right	Internal/Yes	1/4 in. male spade
G92CSA-5		208/240	1/4 cc left	1/8-27 NPT bottom	Internal/No	30 in. leads
G92DAB-1		120	1/4 cc left	None	Internal/Yes	30 in. leads



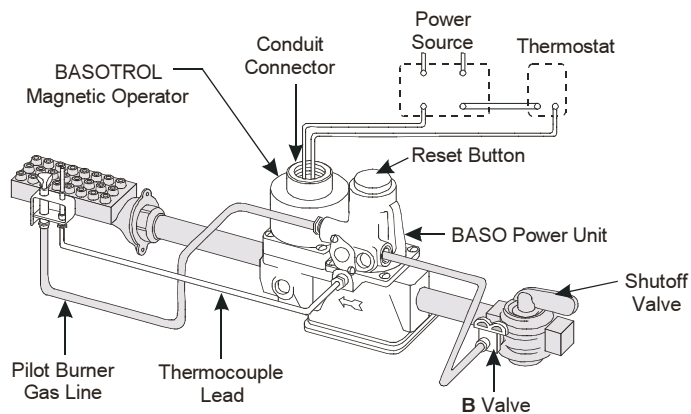
## G92 Dimensions

### Dimensions

Code Number	A Height		B Width		C Length		D Height	
	in.	mm	in.	mm	in.	mm	in.	mm
G92 with Internal Pilot Gas Flow	4.47	112	2.66	67	4.23	106	3.19	80
G92 with External Pilot Gas Flow	4.47	112	3.20	80	4.23	106	3.19	80



### Typical Internal Pilot Gas Flow Installation



### Typical External Pilot Gas Flow Installation



BASO Gas Products LLC

## G93 Series BASOTROL® Automatic Combination Gas Valve with Regulator



### Description

The G93 Series gas valve combines the automatic pilot valve, pressure regulator, and automatic gas valve functions in one valve. Typical applications include commercial cooking equipment, heaters, agricultural equipment, and similar applications. The G93 valve can be used with natural gas or LP gas at pressures up to 0.5 psi and come with an adjustable regulator which is field convertible with a conversion kit. The G93 is available with various voltages and cover options. The optional rotor "B" valve allows for pilot flame adjustment.

### Specifications

- Maximum inlet pressure is 0.5 psi
- Natural Gas Capacity Btu/hr at 1 in. pressure drop is 190,000
- Permissible ambient (surface) temperature is 32 to 155°F (0 to 68°C)

### Agency Listing

- CSA (AGA/CGA) Certificate Number 229521-1656066 (excludes G93HSB-1)
- UL Recognized File Number MH2926

### Electrical Connections

- #18 AWG stranded wire of 1/4 in. male quick-connect terminals

### To Order

To order genuine BASO products, call 1-877-227-6427 (1-877-BASOGAS). Specify the code number from the following selection chart. The G93 valves are factory set for either natural gas or LP gas. Order the correct model for your requirements.

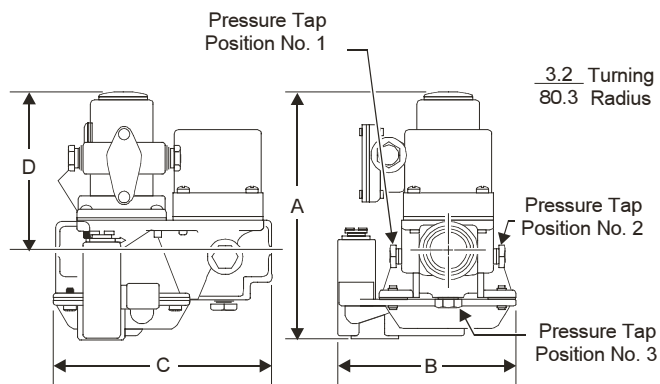
Other models may be made available depending upon customer requirements. Contact BASO Gas Products for availability of products not shown.

### Selection Chart

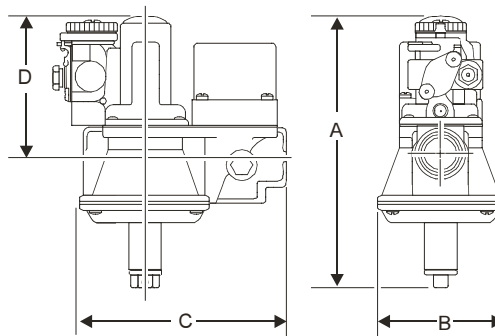
Code Number	Inlet and Outlet Female NPT	VAC (60 Hz)	Pilot Tap (in.)	Pressure Tap (in.)	Regulator Adjustment Location/Rotor "B" Valve	Electrical Connection
G93AAA-16	1/2 in. x 1/2 in.	120	1/4 cc left	1/8-27 NPT bottom	Top/No	1/4 in. male spade
G93AAB-2		120	1/4 cc left	None	Top/Yes	30 in. leads
G93AAB-6		120	1/4 cc left	1/8-27 NPT bottom	Top/Yes	30 in. leads
G93ABA-6		240	1/8-27 NPT left	1/8-27 NPT bottom	Top/No	24 in. leads
G93ABA-9		240	1/4 cc left	None	Top/No	20 in. leads
G93ABA-11		240	1/4 cc left	1/8-27 NPT bottom	Top/No	1/4 in. male spade
G93AGB-6		25	1/4 cc right	1/8-27 NPT bottom	Top/Yes	30 in. leads
G93ASL-4		208/240	1/4 cc left	1/8-27 NPT bottom	Bottom/No	30 in. leads
G93HSB-1		208/240	1/4 cc right	None	Top/Yes	30 in. leads

## Conversion Kit Selection Chart

Conversion Kit	Regulator Location Adjustment	Part Number
Conversion Kit for Regulation to Non-Regulation	Top or Bottom	Y71AA-5
Conversion Kit for 6 to 12 in. W.C. (15 to 30 mbar) Regulation	Top	Y71GF-4
Conversion Kit for 3 to 6 in. W.C. (7.5 to 15 mbar) Regulation	Top	Y71QH-2
Conversion Kit for 8 to 12 in. W.C. (20 to 30 mbar) Regulation	Bottom	Y71GF-3
Conversion Kit for 3 to 6 in. W.C. (7.5 to 15 mbar) Regulation	Bottom	Y71QH-3



**Top Adjust Regulator Model**  
Showing Optional Pressure Tap Positions

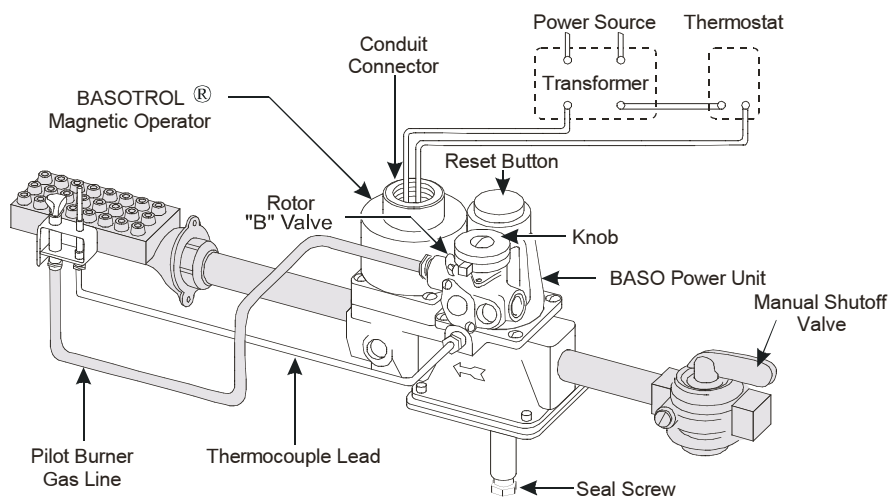


**Bottom Adjust Regulator Model**

## G93 Dimensions

### Dimensions

Series Number	A Height		B Width		C Length		D Height	
	in.	mm	in.	mm	in.	mm	in.	mm
Top Adjust Regulator G93	4.84	123	3.42	87	4.23	107	3.19	81
Bottom Adjust Regulator G93	5.66	144	2.66	67	4.23	107	3.19	81



**Typical Installation Showing Rotor "B" Valve**